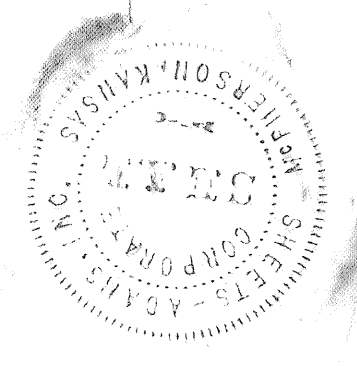
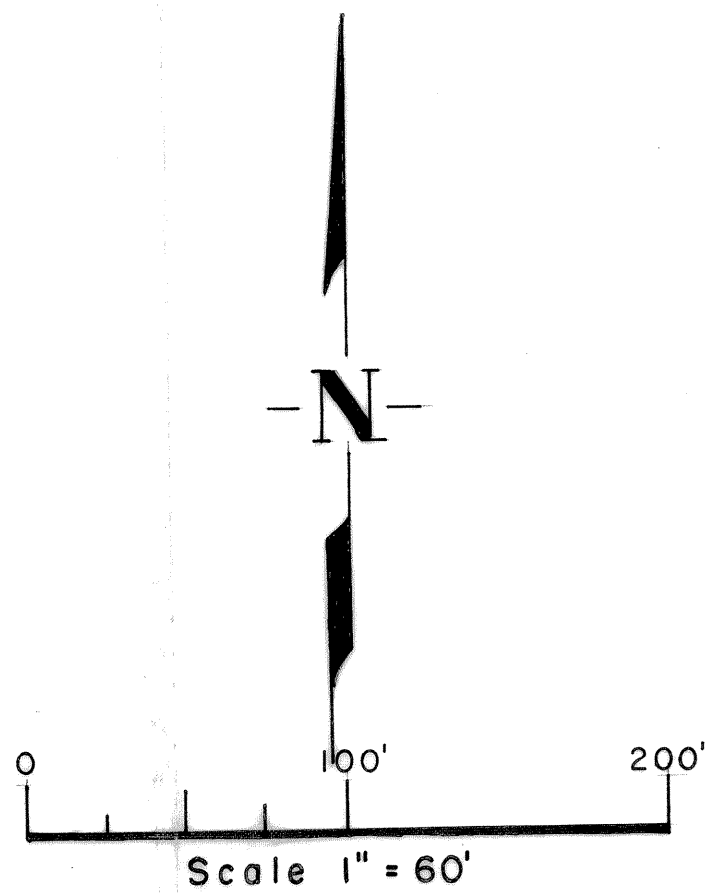


NORTH HIGH ADDITION



SURVEYORS CERTIFICATE
STATE OF KANSAS) SS
COUNTY OF McPHERSON)

This is to certify that I, Francis R. Rankin, a Licensed Professional Engineer of the State of Kansas, have surveyed and subdivided the following described property. Beginning at the center of Section 21, Township 19 South, Range 3 West in McPherson County, Kansas; thence South on the Quarter Section Line 810.1 feet; thence East at an interior angle of 89 degrees fourteen minutes, a distance of 905.0 feet; thence NW at an interior angle of 71 degrees and 45 minutes and a distance of 540.4 feet; thence NW at an interior angle of 168 degrees 52 minutes and a distance of 536.4 feet to the North line of the SE Quarter of Section 21, Township 19 South, Range 3 West; thence West along the North line of said SE Quarter Section 560.0 feet to the point of beginning. Said tract contains 13.86 acres more or less, as shown by the plat which is a correct representation of said survey and subdivision. All distances have been shown in feet and tenths. All curve measurements are on chord distances. All corners of the tract are permanently marked with steel pins set in concrete.

Given under my hand and seal at McPherson, Kansas this 19th day of December, 1966.

Francis R. Rankin
Licensed P.E. No. 799 Kansas
PROFESSIONAL ENGINEER

STATE OF KANSAS) SS
COUNTY OF McPHERSON)

BE IT KNOWN, That the attached plat was submitted to the Planning Commission of the City of McPherson, Kansas, and was by it approved on the 24th day of August, 1966.

Wm. J. Runtz
Chairman of Planning Commission
City of McPherson, Kansas

STATE OF KANSAS) SS
COUNTY OF McPHERSON)

BE IT KNOWN, That the attached plat was submitted to the Zoning Board of McPherson County, Kansas, and was by it approved on the 21st day of October, 1966.

Thomas R. Spencer
Chairman of Zoning Board
McPherson County, Kansas

STATE OF KANSAS) SS
COUNTY OF McPHERSON)

BE IT KNOWN, That the attached plat was submitted to me and that the same is hereby approved this 19th day of December, 1966.

Shelton C. Stover
City Engineer
City of McPherson, Kansas

STATE OF KANSAS) SS
COUNTY OF McPHERSON)

BE IT KNOWN, That the attached plat was submitted to me and that the same is hereby approved this 19th day of December, 1966.

Francis R. Rankin
County Engineer
McPherson County, Kansas

STATE OF KANSAS) SS
COUNTY OF McPHERSON)

I, Linn Peterson, the duly appointed, qualified and now acting clerk of the City of McPherson, Kansas, do hereby certify that the Planning Commission of the City of McPherson, Kansas, recommended approval of the accompanying plat to the Board of Commissioners of the City of McPherson, Kansas, and that said Board adopted said recommendation, approved said plat, and incorporated said approval in the minutes on the 19th day of December, 1966 all of which is on file in my office.

Linn Peterson
City Clerk
City of McPherson, Kansas

IN WITNESS WHEREOF, I have subscribed my name and affixed the seal of said City this 19th day of December, 1966.



STATE OF KANSAS) SS
COUNTY OF McPHERSON)

BE IT KNOWN, That the attached plat has been submitted to me and that the same is hereby approved this 19th day of December, 1966.

Robert F. Stover
City Attorney
City of McPherson, Kansas

STATE OF KANSAS) SS
COUNTY OF McPHERSON)

BE IT KNOWN, That the attached plat has been submitted to me and that the same is hereby approved this 19th day of December, 1966.

David Roland Jones
County Attorney
McPherson County, Kansas

STATE OF KANSAS) SS
COUNTY OF McPHERSON)

I, Milbert Johnson, the duly elected, qualified and now acting County Clerk of McPherson County, Kansas, do hereby certify that the Zoning Board of McPherson County, Kansas, recommended approval of the accompanying plat to the Board of Commissioners of McPherson County, Kansas, and that said Board adopted said recommendation, approved said plat, and incorporated said approval in their minutes on the 24th day of October, 1966, all of which is on file in my office.

Milbert Johnson
County Clerk
McPherson County, Kansas



DEDICATION
STATE OF KANSAS) SS
COUNTY OF McPHERSON)

KNOW ALL MEN BY THESE PRESENTS, that Sheets Adams, Inc., Owners and proprietors of the lands above described in the Certificate of surveyor, have caused the said lands to be surveyed and platted under the name of North High Addition to the City of McPherson, Kansas, and have caused the same to be subdivided into Blocks, Lots, Streets, Avenues and Public Ways, as shown on the accompanying plat to the public use. The said North High Addition and the land contained therein, is held and shall be conveyed subject to the reservations, restrictions, and covenants on record in the office of the Register of Deeds of McPherson County, Kansas.

Dated at McPherson, Kansas December 19th, 1966

William J. Sheets
President
Sheets Adams, Inc.

Attest: *Brief Adams*
Secretary

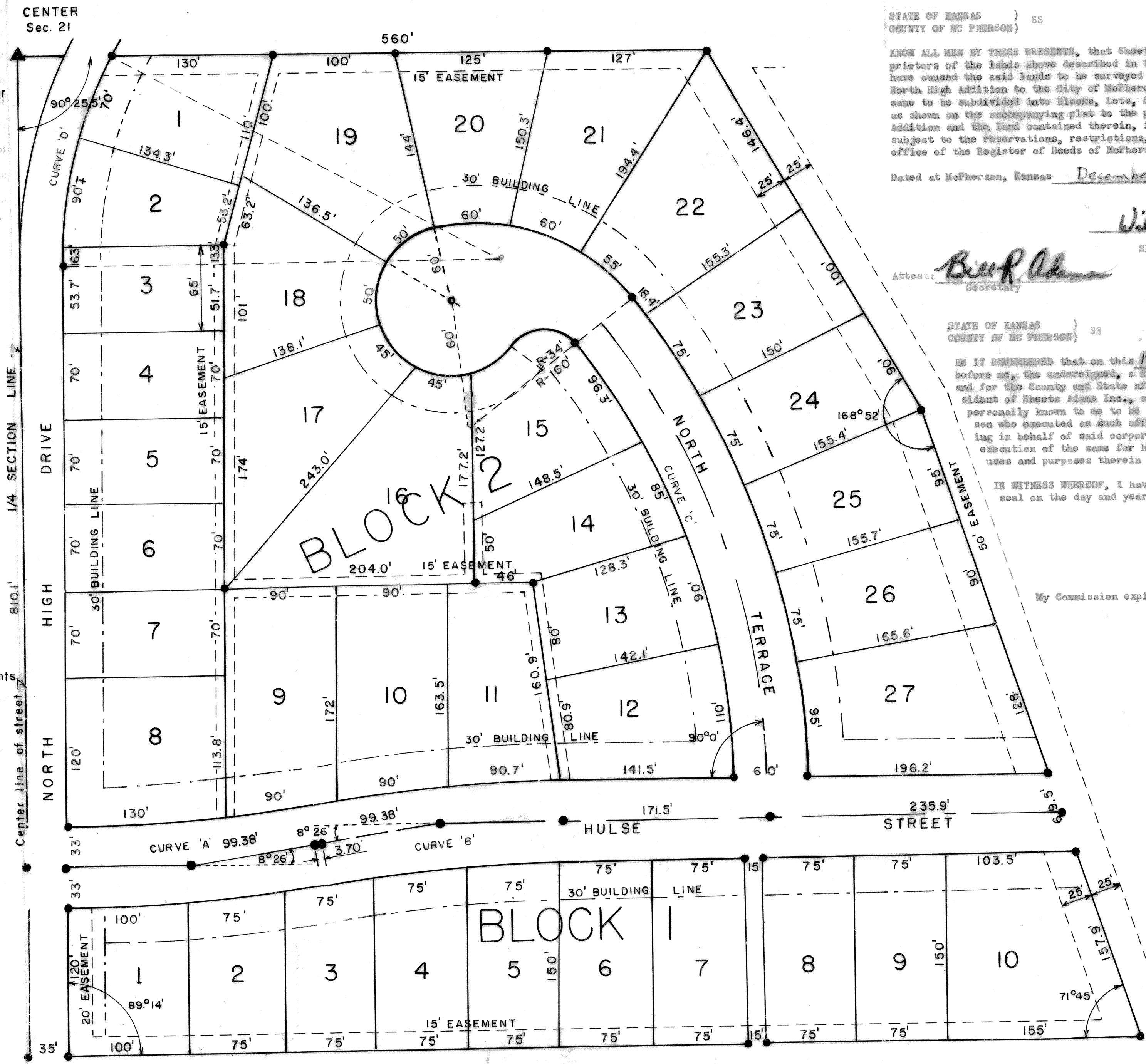
STATE OF KANSAS) SS
COUNTY OF McPHERSON)

BE IT REMEMBERED that on this 19th day of December, 1966 before me, the undersigned, a Notary Public, duly commissioned in and for the County and State aforesaid came *William J. Sheets*, president of Sheets Adams, Inc., a corporation of the State of Kansas, personally known to me to be such officer, and to be the same person who executed as such officer the foregoing instrument of writing in behalf of said corporation, and he duly acknowledged the execution of the same for himself and for said corporation for the uses and purposes therein set forth.

IN WITNESS WHEREOF, I have hereunto set my hand and official seal on the day and year last above written.

Robert F. Stover
Notary Public

My Commission expires: 4-29-69



Angles are center line data.

CURVE 'A' & 'B'
R = 1345.33'
D = 99.38'
T = 8° 26'

CURVE 'C'
R = 605'
D = 9° 28'
L = 400'

CURVE 'D'
R = 390'
D = 14° 44'
T = 170'

Curve Measurements are on chord distances

+ 3268
State of Kansas, McPherson Co., SS
This instrument was filed for record on the 23rd day of December, A.D., 1966 at 2:00 o'clock P.M., and duly recorded in book 11, page 11.
Maudie Burk
Register of Deeds
Frances Gauffert
Deputy

